

CONNECTION's Trends & Indicators in Higher Education, 2007

CONNECTION's "Trends & Indicators in Higher Education, 2007" features more than 60 tables and charts exploring New England's changing demography, high school performance and graduation, college enrollment, college graduation rates and degree production, higher education financing and university research.

New this year, we have organized the data on high school performance and graduation, college enrollment, college graduation rates and degrees to correspond with the four goals of the New England Board of Higher Education's college readiness and success initiative:

High School Success *Increasing the number of high school graduates and GED recipients in New England;*

College Readiness *Increasing the number of high school graduates prepared for college and career success;*

College Access *Increasing the number of people enrolling in college; and*

College Success *Increasing the number of college graduates.*

A new data feature titled "Indicators of College Readiness: A State-by-State Comparison" offers a look at readiness benchmarks including social indicators such as children living in poverty, preschool funding and attendance, K-12 course-taking, NAEP and SAT performance, AP scores and high school graduation rates.

Some highlights from Trends & Indicators in Higher Education, 2007:

- Since 1990, New England's population has grown by just 8 percent, compared with 20 percent for the nation as a whole. And all six New England states are among the bottom 10 nationally in the growth of 18- to 24-year-olds since 1990.

- Only 76 percent of New England 9th-graders graduate from high school in the normal four years time, and just 59 percent of those high school graduates enroll in college the following fall.

- Fewer than half of New England students who do finish high school have completed the necessary courses and mastered the skills to be considered "college ready."

- New England college and university enrollment topped 875,000 in 2005, but the region's once-disproportionate share of total U.S. enrollment continued to drop to 5 percent.

- At least 16 OECD countries increased college enrollment at higher rates than the United States between 1995 and 2003, including 10 countries that did so despite overall declines in their traditional college-age populations.

- Nearly half of New England college students attend private institutions compared with about one quarter of college students nationally.

- More than 43,000 foreign students are enrolled on New England campuses—nearly half of them at just 10 of New England's 270 colleges and universities.

- Only 22 percent of students graduate from New England community colleges within three years of enrolling—and substantial gaps exist among racial and ethnic groups. Just 45 percent graduate from New England four-year state colleges (excluding land grants) within six years.

- Three in 10 doctorates awarded by New England universities go to foreign students, while just one in 10 go to U.S. minority students.

- Total yearly charges for resident students, including room and board, average nearly \$40,000 at New England's private four-year institutions and \$18,000 at the region's public institutions—far above national rates.

- College costs gobble up a large and growing share of family income, especially for low-income New England families.

- Americans pay an average of \$242 each in annual state taxes to support public higher education and student aid in their states. New Englanders, however, pay just \$177.

- New England universities performed \$3.3 billion worth of research and development in 2004, and the region's share of all U.S. university R&D inched up to 7.7 percent—still a far cry from its 10 percent share in the mid-1980s.

The data presented on these pages are collected and analyzed annually by the New England Board of Higher Education's (NEBHE's) Department of Policy and Research. The data are drawn from a variety of sources, including the U.S. Department of Education, the National Science Foundation, the College Board, the National Center for Higher Education Management Systems, and NEBHE's own Annual Survey of New England Colleges and Universities.

More comprehensive and detailed figures are available online through the NEBHE Department of Policy and Research at www.nebhe.org/research.

Data compiled by former NEBHE research analyst Sue Klemmer, now with North Shore Community College's Department of Planning and Research, and NEBHE intern Miriam Rubin, who is a junior majoring in sociology at Connecticut College.



INDEX OF FIGURES

DEMOGRAPHY

- Fig. 1: Change in Population, 1990 to 2006, New England States and Other Regions
- Fig. 2: Population of New England by Race, 2005
- Fig. 3: Change in Population Ages 25 to 34, 1990 to 2004, Top Five and Bottom Five States
- Fig. 4: Change in Population of Immigrant Groups in New England by Country of Origin, 1990 to 2000
- Fig. 5: Occupational Status of Immigrants in New England, 2000

HIGH SCHOOL SUCCESS

- Fig. 6: Public High School Graduates in New England, Projected 2000 to 2018
- Fig. 7: New England Public High School Graduates by Race, Projected 2007 to 2018
- Fig. 8: Public High School Graduation Rates, 2003-04
- Fig. 9: New England High School Graduation Rates by Race/Ethnicity and Gender, 2002-03
- Fig. 10: Population Ages 20-24 with a High School Credential: International Comparison, 2003
- Fig. 11: Education Pipeline: High School Graduation, College Participation and Success

COLLEGE READINESS

- Fig. 12: Indicators of College Readiness: A State-by-State Comparison

CONNECTION looks at state-by-state indicators of college readiness, including: children living in poverty, preschool funding and attendance, K-12 course-taking, student-teacher ratios, NAEP and SAT performance, AP scores, high school graduation and college enrollment.

COLLEGE ACCESS

- Fig. 13: Percentage of High School Graduates Enrolling in College the Fall after Graduating High School, 2004
- Fig. 14: Index of Change in Higher Education Enrollments: International Comparison, 1995 to 2004
- Fig. 15: Migration of First-Time Degree Seeking College Freshmen, 1994 and 2004
- Fig. 16: Intended College Majors of College-Bound Seniors in New England, 2006
- Fig. 17: Total Enrollment at New England Colleges and Universities and New England's Share of U.S. Enrollment, 1995 to 2005
- Fig. 18: Higher Education Enrollment in New England by Type of Institution and Full-Time Status, 2005
- Fig. 19: Distribution of Higher Education Enrollment, Public vs. Private, 2005
- Fig. 20: Public vs. Private College Enrollment in New England, 1995 to 2005
- Fig. 21: Undergraduate vs. Graduate Enrollment in New England, 1995 to 2005
- Fig. 22: Full-Time vs. Part-Time College Enrollment in New England, 1995 to 2005
- Fig. 23: Total Higher Education Enrollment by Gender in New England, 1975 to 2005
- Fig. 24: New England Institutions with the Largest Undergraduate Enrollments, Fall 2005
- Fig. 25: New England Cities with the Largest College Enrollments, 2005
- Fig. 26: Enrollment at New England Colleges and Universities by Race/Ethnicity, 2005
- Fig. 27: Minority Enrollment by State and Race/Ethnicity, 1995 and 2005
- Fig. 28: Public vs. Private Enrollment in New England by Race/Ethnicity, 2005
- Fig. 29: Foreign Enrollment at New England Colleges and Universities and Share of U.S. Foreign Enrollment, 1970 to 2006
- Fig. 30: Foreign Students in New England by Countries of Origin and Field of Study, 2006
- Fig. 31: Estimated Economic Impact from International Students, 2005-06
- Fig. 32: New England Institutions Enrolling More than 1,000 Foreign Students, 2006
- Fig. 33: New England Institutions with More than 10% of Undergraduates Studying Abroad, 2005

COLLEGE SUCCESS

- Fig. 34: Graduation Rates by State, Race/Ethnicity and Type of Institution, 2005
- Fig. 35: Graduation and Transfer Rates by State and Type of Institution, 2005
- Fig. 36: Total Degrees Awarded at New England's Colleges and Universities and New England's Share of U.S. Degrees, 1995 to 2005
- Fig. 37: Degrees Awarded in New England by Gender, 1973 to 2005
- Fig. 38: Percentage of 25- to 34-Year-Olds with Postsecondary Degrees: International Comparison, 2003
- Fig. 39: Associate Degrees Awarded to Men, Women, Minorities and Foreign Students, 2005
- Fig. 40: Associate Degrees Awarded at New England Colleges and Universities Showing Selected Fields of Study, 1971 to 2005
- Fig. 41: Bachelor's Degrees Awarded to Men, Women, Minorities and Foreign Students, 2005
- Fig. 42: Bachelor's Degrees Awarded at New England Colleges and Universities Showing Selected Fields of Study, 1971 to 2005
- Fig. 43: Master's Degrees Awarded to Men, Women, Minorities and Foreign Students, 2005
- Fig. 44: Master's Degrees Awarded at New England Colleges and Universities by Selected Fields of Study, 1971 to 2005
- Fig. 45: First-Professional Degrees Awarded to Men, Women, Minorities and Foreign Students, 2005
- Fig. 46: First-Professional Degrees Awarded at New England Colleges and Universities by Fields of Study, 1971 to 2005
- Fig. 47: Doctorates Awarded to Men, Women, Minorities and Foreign Students, 2005
- Fig. 48: Doctorates Awarded at New England Colleges and Universities by Selected Fields of Study, 1971 to 2005

FINANCING HIGHER EDUCATION

- Fig. 49: Average Expenses, New England vs. United States, Academic Year 2006-2007
- Fig. 50: Tuition and Mandatory Fees, Academic Year 2005-06 and 2006-07 with Percent Change
- Fig. 51: Appropriations of State Tax Funds for Higher Education Operating Expenses, Fiscal 2007
- Fig. 52: Estimated Student Aid by Source, United States, Academic Year 2005-06
- Fig. 53: Federal Student Financial Aid Programs – Total Expenditures or Allocations and Number of Recipients
- Fig. 54: Total State Grant Aid Awarded, by State, 1994-95, 1999-2000, 2003-04, 2004-05
- Fig. 55: State Need-Based Aid as a Percent of Federal Pell Grant Aid, 2005
- Fig. 56: Percentage of Family Income Needed to Pay for College, 2005
- Fig. 57: Private vs. Federal Student Loan Volume, 1995-96 And 2005-06
- Fig. 58: Average Student Debt at Public and Private Four-Year Institutions by State, Class of 2005
- Fig. 59: New England's Ten Largest College Endowments, Fiscal 2006

UNIVERSITY RESEARCH

- Fig. 60: Research and Development Expenditures at New England's Universities and Colleges and New England's Share of U.S. R&D Expenditures, 1999 to 2004
- Fig. 61: Regional Comparison of Research and Development Expenditures at Universities and Colleges, 1999 and 2004
- Fig. 62: Research and Development Expenditures at New England Universities and Colleges by Field, 2004
- Fig. 63: Research and Development Expenditures at New England Universities and Colleges by Source of Funds, 1999 to 2004
- Fig. 64: Research and Development Expenditures at New England Colleges and Universities by U.S. Rank and Source of Funds, 2004

Since 1990, New England's population has grown by just 8 percent, compared with 20 percent for the nation as a whole. And all six New England states are among the bottom 10 nationally in the growth of 18- to 24-year-olds since 1990.

Fig. 1: Change in Population, 1990 to 2006, New England States and Other Regions

	1990	2000	2003	2004	2005	2006	% Change 1990 to 2005	% Change 2005 to 2006
Connecticut	3,287,116	3,405,565	3,483,372	3,503,604	3,510,297	3,504,809	7%	-0.2%
Maine	1,227,928	1,274,923	1,305,728	1,317,253	1,321,505	1,321,574	8	0.0
Massachusetts	6,016,425	6,349,097	6,433,422	6,416,505	6,398,743	6,437,193	7	0.6
New Hampshire	1,109,252	1,235,786	1,287,687	1,299,500	1,309,940	1,314,895	19	0.4
Rhode Island	1,003,464	1,048,319	1,076,164	1,080,632	1,076,189	1,067,610	6	-0.8
Vermont	562,758	608,827	619,107	621,394	623,050	623,908	11	0.1
New England	13,206,943	13,922,517	14,205,480	14,238,888	14,239,724	14,269,989	8	0.2
Middle Atlantic	37,602,286	39,671,861	40,225,598	40,332,259	40,402,171	40,471,364	8	0.2
East North Central	42,008,942	45,155,037	45,842,992	46,031,860	46,156,447	46,275,645	10	0.3
West North Central	17,659,690	19,237,739	19,585,918	19,697,992	19,815,527	19,942,091	13	0.6
South Atlantic	43,566,853	51,769,160	54,310,395	55,182,959	56,179,519	57,143,670	31	1.7
East South Central	15,176,284	17,022,810	17,349,717	17,480,032	17,615,260	17,754,447	17	0.8
West South Central	26,702,793	31,444,850	32,831,282	33,281,974	33,710,634	34,185,635	28	1.4
Mountain	13,658,776	18,172,295	19,387,045	19,798,992	20,291,305	20,845,987	53	2.7
Pacific	39,127,306	45,025,637	47,055,375	47,610,448	47,999,817	48,509,656	24	1.1
United States	248,709,873	281,421,906	290,793,802	293,655,404	296,410,404	299,398,484	20%	1.0%

Note: Middle Atlantic includes New Jersey, New York, Pennsylvania. East North Central includes Ohio, Illinois, Indiana, Michigan, Wisconsin. West North Central includes Minnesota, Iowa, Missouri, North Dakota, South Dakota, Nebraska, Kansas. South Atlantic includes Delaware, Maryland, District of Columbia, Virginia, West Virginia, North Carolina, South Carolina, Georgia, Florida. East South Central includes Kentucky, Tennessee, Alabama, Mississippi. West South Central includes Arkansas, Louisiana, Oklahoma, Texas. Mountain includes Montana, Idaho, Wyoming, Colorado, New Mexico, Arizona, Utah, Nevada. Pacific includes Washington, Oregon, California, Alaska, Hawaii.

Source: New England Board of Higher Education analysis of U.S. Census Bureau data.

Fig. 2: Population of New England by Race, 2005

	White alone	Black or African-American alone	American Indian and Alaska Native alone	Asian alone	Native Hawaiian and Other Pacific Islander alone	Two or more races	Total
Connecticut	2,981,509	354,111	11,954	112,366	2,752	47,605	3,510,297
Maine	1,280,776	9,946	7,293	10,893	455	12,142	1,321,505
Massachusetts	5,548,846	438,892	18,340	301,927	5,383	85,355	6,398,743
New Hampshire	1,258,274	12,670	3,115	22,874	543	12,464	1,309,940
Rhode Island	956,569	66,483	6,448	29,018	1,307	16,364	1,076,189
Vermont	603,849	3,904	2,181	6,361	165	6,590	623,050
New England	12,629,823	886,006	49,331	483,439	10,605	180,520	14,239,724

Note: The above categories reflect the U.S. Census Bureau Guidance on the Presentation and Comparison of Race and Hispanic Origin; www.census.gov.

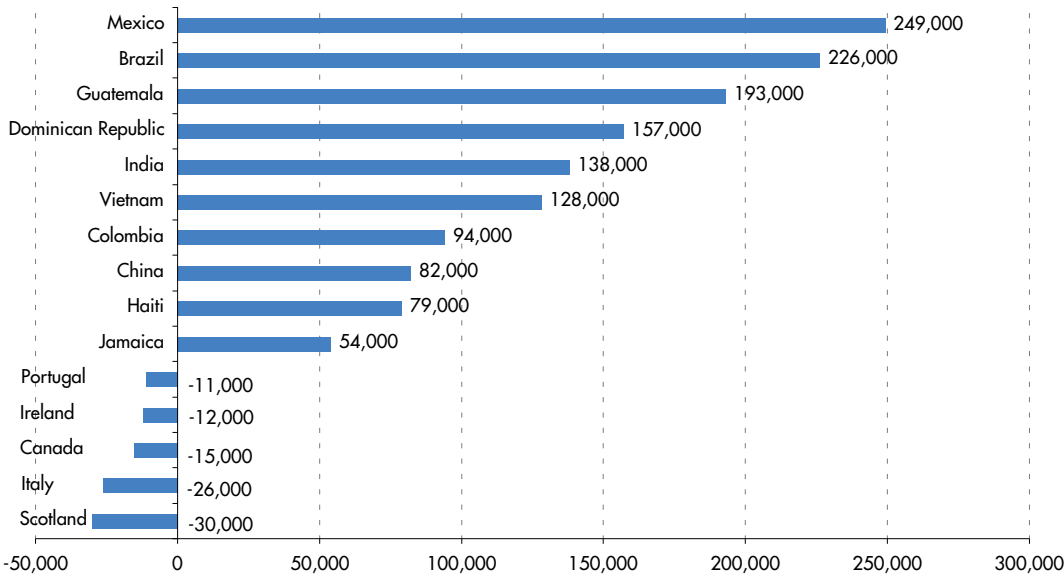
Source: New England Board of Higher Education analysis of U.S. Census Bureau data.

Fig. 3: Change in Population Ages 25 to 34, 1990 to 2004, Top Five and Bottom Five States

Rank	State	1990	2004	1990-2004 Percentage Change
1st	Nevada	222,027	354,894	60%
2nd	Utah	274,898	399,210	45
3rd	Arizona	634,899	830,117	31
4th	Idaho	152,800	184,610	21
5th	Colorado	611,849	717,277	17
United States		43,175,932	40,031,938	-7%
46th	Vermont	95,257	69,580	-27
47th	New Hampshire	204,823	148,953	-27
48th	Alaska	112,965	81,152	-28
49th	Maine	205,235	145,686	-29
50th	Connecticut	583,882	409,393	-30%

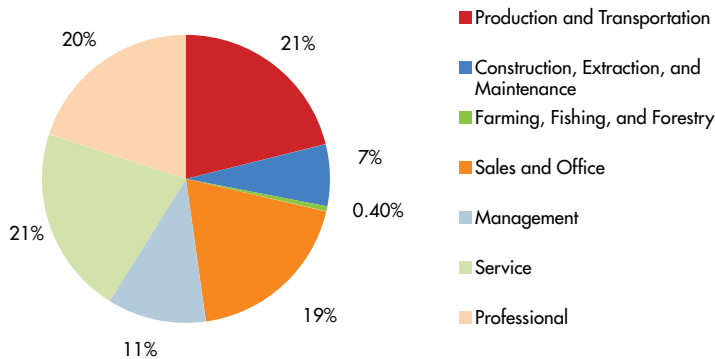
Source: University of New Hampshire Carsey Institute analysis of U.S. Census Bureau data; www.carseyinstitute.unh.edu.

Fig. 4: Change in Population of Immigrant Groups in New England by Country of Origin, 1990 to 2000



Source: New England Board of Higher Education analysis of Federal Reserve Bank of Boston data; www.bos.frb.org.

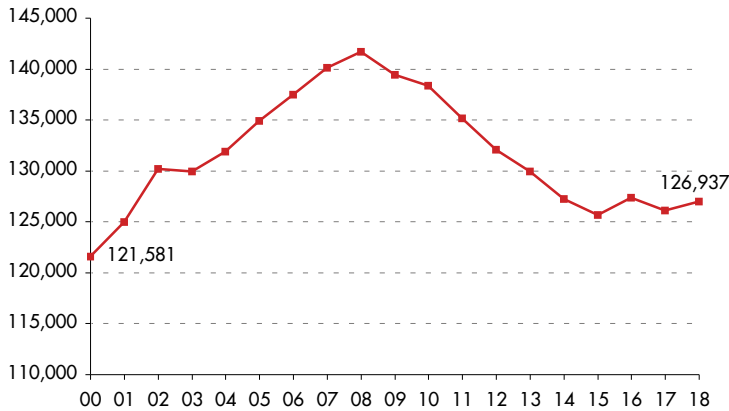
Fig. 5: Occupational Status of Immigrants in New England, 2000



Source: New England Board of Higher Education analysis of Federal Reserve Bank of Boston data; www.bos.frb.org.

New England's high school graduating classes will shrink over the next 10 years due to sheer demography. Meanwhile, only about 25 of every 100 public school 9th-graders in the region will graduate from high school, then enroll in and graduate from college.

Fig. 6: Public High School Graduates in New England, Projected 2000 to 2018



Source: New England Board of Higher Education analysis of Western Interstate Commission for Higher Education (WICHE) data.

Fig. 7: New England Public High School Graduates by Race, Projected 2007 to 2018

	2006-07	2017-18	Projected % Change
Connecticut			
American Indian	103	159	54%
Asian	1,271	2,858	125%
Hispanic	3,885	5,166	33%
African-American	4,355	4,067	-7%
White	26,511	22,422	-15%
Maine			
American Indian	66	94	42%
Asian	155	259	67%
Hispanic	114	202	77%
African-American	241	540	124%
White	12,310	9,841	-20%
Massachusetts			
American Indian	219	490	124%
Asian	3,260	5,074	56%
Hispanic	5,042	5,948	18%
African-American	5,057	4,614	-9%
White	46,978	40,093	-15%
New Hampshire			
American Indian	29	61	110%
Asian	213	874	310%
Hispanic	315	912	190%
African-American	152	378	149%
White	11,886	9,902	-17%
Rhode Island			
American Indian	51	120	135%
Asian	299	335	12%
Hispanic	1,513	2,713	79%
African-American	944	1,240	31%
White	7,240	5,828	-20%
Vermont			
American Indian	33	24	-27%
Asian	114	213	87%
Hispanic	88	873	892%
African-American	43	47	9%
White	6,339	4,786	-25%

Source: New England Board of Higher Education analysis of Western Interstate Commission for Higher Education (WICHE) data.


 For more trends and indicators, visit www.nebhe.org/research.

Fig. 8: Public High School Graduation Rates, 2003-04

	Fall 2000 9th-Graders	2003-04 High School Graduates	Percent Graduating in Four Years
Connecticut	45,525	34,573	76%
Maine	17,134	13,278	78
Massachusetts	78,201	58,326	75
New Hampshire	17,578	13,309	76
Rhode Island	12,819	9,258	72
Vermont	8,595	7,100	83
New England	179,852	135,844	76
United States	3,963,294	2,762,309	70%

Source: National Center for Higher Education Management Systems (NCHEMS); www.higheredinfo.org.

Fig. 9: New England High School Graduation Rates by Race/Ethnicity and Gender, 2002-03

	All Students			Native American	Asian American	Hispanic	African-American	White
	Male	Female						
Connecticut	79%	77%	82%	26%	NA	52%	61%	85%
Maine	74	71	73	NA	30	NA	NA	73
Massachusetts	72	68	76	30	66	41	53	79
New Hampshire	78	NA	NA	NA	NA	NA	NA	NA
Rhode Island	72	68	75	NA	55	55	61	75
Vermont	81	NA	NA	NA	60	NA	NA	81
United States	70%	65%	73%	47%	77%	56%	52%	76%

Source: New England Board of Higher Education analysis of Editorial Projects in Education (EPE) Research Center data, *Diplomas Count*; www.edweek.org/rc.

Fig. 10: Population Ages 20-24 with a High School Credential: International Comparison, 2003

	Percentage with a High School Credential
Korea	97%
Slovak Republic	94
Norway	94
Czech Republic	91
Canada	88
Finland	86
Sweden	86
United States	86
Ireland	85
Hungary	85
New Zealand	84
Austria	84
Belgium	81
France	79
Australia	79
Greece	78
United Kingdom	77
Denmark	76
Germany	73

Note: The term "high school credential" includes diplomas and similar awards representing completion of secondary school as well as alternative routes to completion such as GEDs in the United States. Figure reflects only OECD-member countries, which include 23 European countries as well as Australia, Canada, Japan, Korea, Mexico, New Zealand and the United States.

Source: National Center for Public Policy and Higher Education analysis of Organisation for Economic Co-operation and Development (OECD) data.

Fig. 11: Education Pipeline: High School Graduation, College Participation and Success

For every 100 public high school 9th graders...				
	Graduate from High School	Enter College the Following Fall	Return to the Same College for Sophomore Year	Graduate College within 150% Time
Connecticut	76	46	35	24
Maine	77	38	28	20
Massachusetts	75	47	36	26
New Hampshire	76	42	31	24
Rhode Island	72	40	29	20
Vermont	83	36	28	22
United States	69	39	27	18

Note: 150% percent of time means that students attending four-year institutions graduate within six years and students attending two-year institutions graduate within three years.

Source: National Center for Higher Education Management Systems analysis of US Department of Education data.


CONNECTION looks at state-by-state indicators of college readiness, including: children living in poverty, preschool funding and attendance, K-12 course-taking, student-teacher ratios, NAEP and SAT performance, AP scores, high school graduation and college enrollment.

Fig. 12: Indicators of College Readiness: A State-by-State Comparison

	Conn.	Maine	Mass.	N.H.	R.I.	Vt.	New England	United States
Percentage of Children in Poverty, 2005	12%	17%	14%	9%	19%	15%	NA	19%
Children in Households where Householder Has a Bachelor's Degree or Higher, 2005	39%	27%	39%	36%	31%	34%	NA	27%
State Preschool Programs, 2005								
Percent of 3- and 4-year-olds enrolled	17%	14%	15%	NA	NA	58%	NA	20%
State spending per child enrolled	\$6,663	\$1,997	\$4,848	NA	NA	\$2,488	NA	\$3,551
NAEP Achievement Levels, 2005								
4th Grade Math	43%	39%	49%	47%	31%	44%	NA	35%
4th Grade Reading	38%	35%	44%	39%	30%	39%	NA	30%
8th Grade Math	35%	30%	43%	35%	24%	38%	NA	29%
8th Grade Reading	34%	38%	44%	38%	29%	37%	NA	29%
8th Grade Writing, 2002	45%	36%	42%	NA	29%	41%	NA	NA
Expenditures per Student in Public K-12 Schools, 2004-05	\$11,874	\$10,723	\$11,681	\$9,555	\$10,641	\$11,661	NA	\$9,644
Student-Teacher Ratios in Public K-12 Schools, 2005	14:1	12:1	15:1	14:1	11:1	11:1	NA	NA
The number of high school juniors and seniors per 1,000 scoring 3 (out of 5) or higher on an AP subject test.	217	129	210	99	106	150	NA	NA
PSAT Participation, 2006								
Percent of 11th Graders Taking PSAT	78%	74%	72%	64%	83%	55%	73%	NA
Percent of 10th Graders Taking PSAT	57%	98%	45%	32%	83%	16%	54%	NA
SAT Performance, 2006								
Participation Rate	84%	73%	85%	82%	69%	67%	NA	NA
Mean Critical Reading Scores	512	501	513	520	495	513	511	503
Mean Math Scores	516	501	524	524	502	519	518	518
Mean Writing Scores	511	491	510	509	490	502	507	497
Percent of Seniors with College-Ready Transcripts	40%	42%	41%	40%	40%	45%	NA	36%
High School Graduation Rate, 2004	76%	78%	75%	76%	72%	83%	76%	70%
Percentage of High School Graduates Entering College the Fall after Graduation, 2004	61%	50%	63%	55%	56%	43%	59%	56%

Notes: For Maine, preschool data refer to 4 year olds only; New Hampshire and Rhode Island have no distinct state preschool programs. NAEP Achievement Levels represent the percent of students that scored proficient on the National Assessment of Educational Progress or NAEP exams. In order to have a "College-Ready Transcript" students must have taken at least four years of English, three years of math, and two years of natural science, social science and foreign language before graduating from high school.

Sources: U.S. Census Bureau, www.census.gov; National Institute for Early Education Research; Editorial Projects in Education Research Center; Collegeboard, www.collegeboard.com; The National Center for Public Policy and Higher Education; Kids Count, Annie Casey Foundation; National Education Association.

 For more trends and indicators, visit www.nebhe.org/research.

COLLEGE ACCESS

New England college and university enrollment topped 875,000 in 2005, but the region's once-disproportionate share of total U.S. enrollment continued to drop to 5 percent.

Fig. 13: Percentage of High School Graduates Enrolling in College the Fall after Graduating High School, 2004

	High School Graduates 2004	First-Time Freshmen Enrolled Directly from High School Enrolled Anywhere in the U.S. Fall 2004	Percent of High School Graduates Going Directly to College
Connecticut	41,202	25,154	61%
Maine	16,050	7,965	50
Massachusetts	69,051	43,806	63
New Hampshire	15,780	8,737	55
Rhode Island	11,201	6,229	56
Vermont	8,470	3,679	43
New England	161,754	95,570	59
United States	3,053,563	1,699,635	56%

Source: New England Board of Higher Education analysis of National Center for Higher Education Management Systems (NCHEMS) data; www.higheredinfo.org.

Fig. 14: Index of Change in Higher Education Enrollments: International Comparison, 1995 to 2003

(1995=100)

	Change in Total Enrollment	Change in Enrollment Accounted for by	
		Change in Size of Relevant Age Group	Change in Rate of Participation from Relevant Age Group
Hungary	229	89	232
Greece	189	105	180
Iceland	183	106	174
Czech Republic	170	93	174
Korea	159	84	175
Sweden	146	95	155
Mexico	146	109	134
Ireland	142	110	128
Portugal	133	95	140
Australia	129	103	126
United Kingdom	126	97	131
Finland	125	100	126
Denmark	122	90	137
Spain	121	93	127
Norway	117	92	126
Belgium	116	97	122
United States	112	107	105
Germany	104	85	119
France	103	94	110
Austria	93	67	101

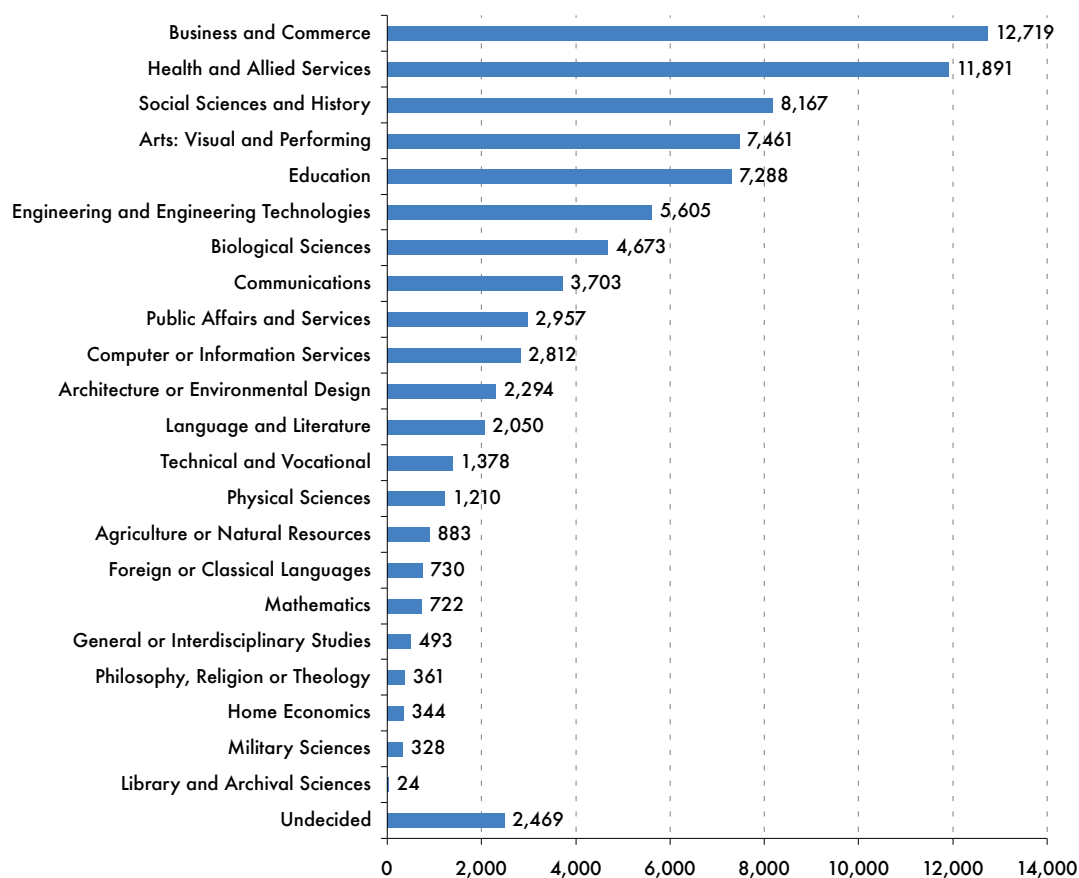
Note: All data is taken from 1995 and 2003 except data for Austria which is from 1995 and 2002. Figure reflects only OECD-member countries, which include 23 European countries as well as Australia, Canada, Japan, Korea, Mexico, New Zealand and the United States.

Source: National Center for Public Policy of Higher Education analysis of Organisation for Economic Co-operation and Development and U.S. Census Bureau data.

Fig. 15: Migration of First-Time Freshmen to and from New England, 2004

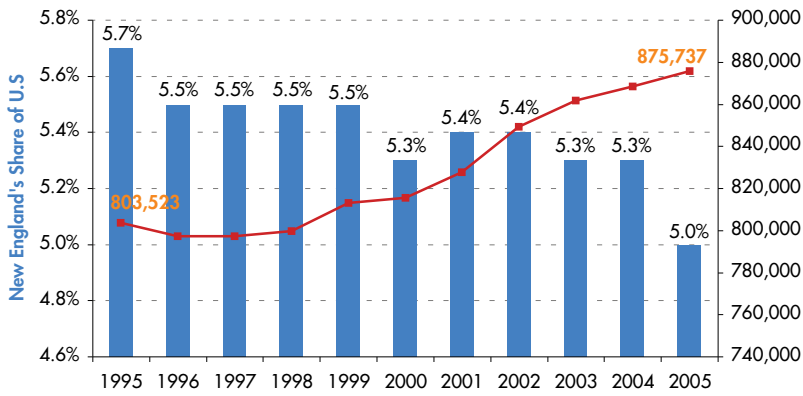
State of Origin	Total Freshmen from State	Destination State						Total Enrolling in New England
		CT	ME	MA	NH	RI	VT	
Connecticut	25,152	14,513	159	2,393	593	949	417	19,024
Maine	7,965	145	4,974	759	404	106	248	6,636
Massachusetts	43,803	1,670	545	29,869	1,818	1,826	907	36,635
New Hampshire	8,737	235	310	1,237	4,781	209	364	7,136
Rhode Island	6,229	244	39	776	204	4,011	83	5,357
Vermont	3,679	91	149	373	266	81	1,592	2,552
Total from New England	95,565	16,898	6,176	35,407	8,066	7,182	3,611	77,340

Source: New England Board of Higher Education analysis of Postsecondary Education Opportunity data; www.postsecondary.org.

Fig. 16: Intended College Majors of College-Bound Seniors in New England, 2006

Source: The College Board, www.collegeboard.com.

Fig. 17: Total Enrollment at New England Colleges and Universities and New England's Share of U.S. Enrollment, 1995 to 2005



Source: New England Board of Higher Education analysis of U.S. Department of Education data.

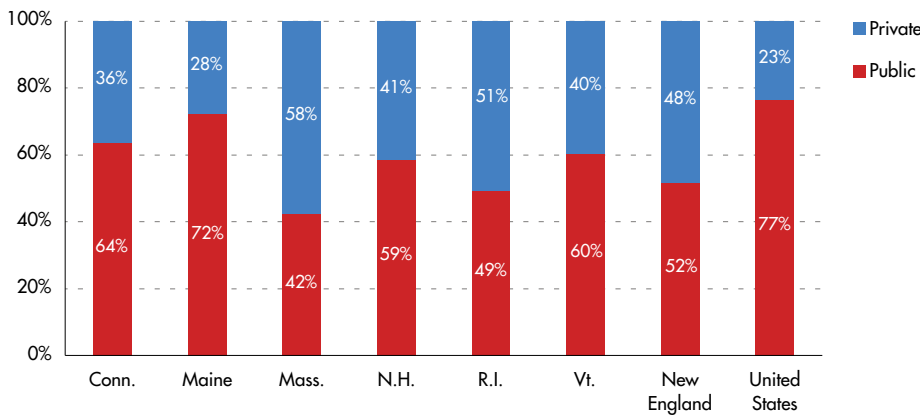
Fig. 18: Higher Education Enrollment in New England by Type of Institution and Full-Time Status, 2005

	All Institutions			Public Institutions			Private Institutions		
	Total	Full-time	Part-time	Total	Full-time	Part-time	Total	Full-time	Part-time
Connecticut	175,680	114,080	61,600	111,705	64,609	47,096	63,975	49,471	14,504
Maine	65,551	40,689	24,862	47,519	27,446	20,073	18,032	13,243	4,789
Massachusetts	443,316	305,271	138,045	187,913	106,411	81,502	255,403	198,860	56,543
New Hampshire	69,893	47,646	22,247	41,007	25,589	15,418	28,886	22,057	6,829
Rhode Island	81,382	58,906	22,476	40,008	22,715	17,293	41,374	36,191	5,183
Vermont	39,915	28,933	10,982	24,090	15,581	8,509	15,825	13,352	2,473
New England	875,737	595,525	280,212	452,242	262,351	189,891	423,495	333,174	90,321
United States	17,350,000	10,483,000	6,867,000	13,283,000	NA	NA	4,068,000	NA	NA
New England as a % of United States	5.0	5.7	4.1	3.4	NA	NA	10.4	NA	NA

Note: U.S. totals are projected by the U.S. Department of Education. Full-time and part-time breakdowns for public and private institutions were not available.

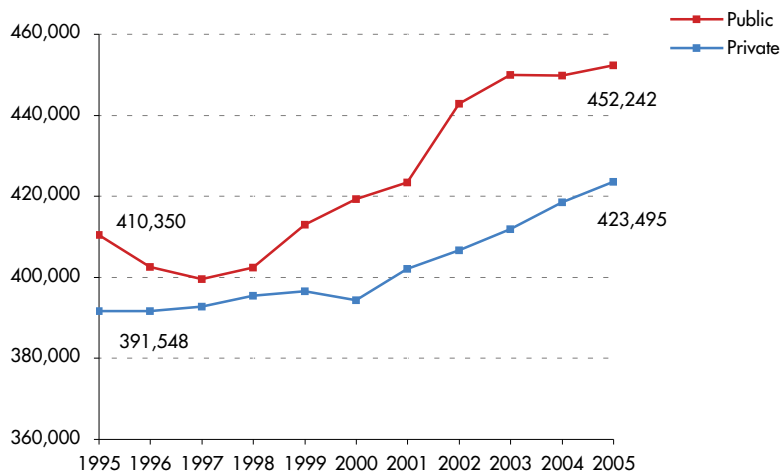
Source: New England Board of Higher Education analysis of U.S. Department of Education data.

Fig. 19: Distribution of Higher Education Enrollment, Public vs. Private, 2005



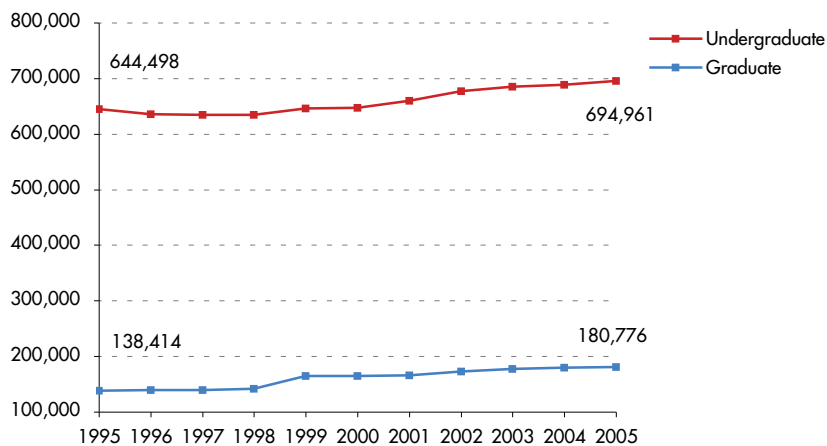
Source: New England Board of Higher Education analysis of U.S. Department of Education data.

Fig. 20: Public vs. Private College Enrollment in New England, 1995 to 2005



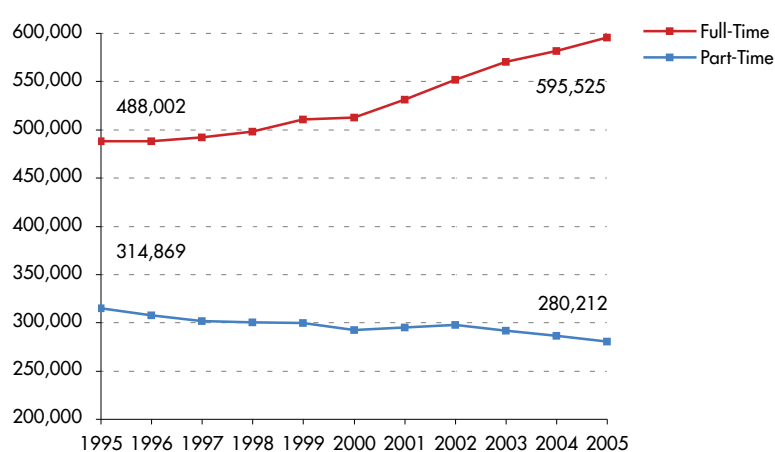
Source: New England Board of Higher Education analysis of U.S. Department of Education data.

Fig. 21: Undergraduate vs. Graduate Enrollment in New England, 1995 to 2005



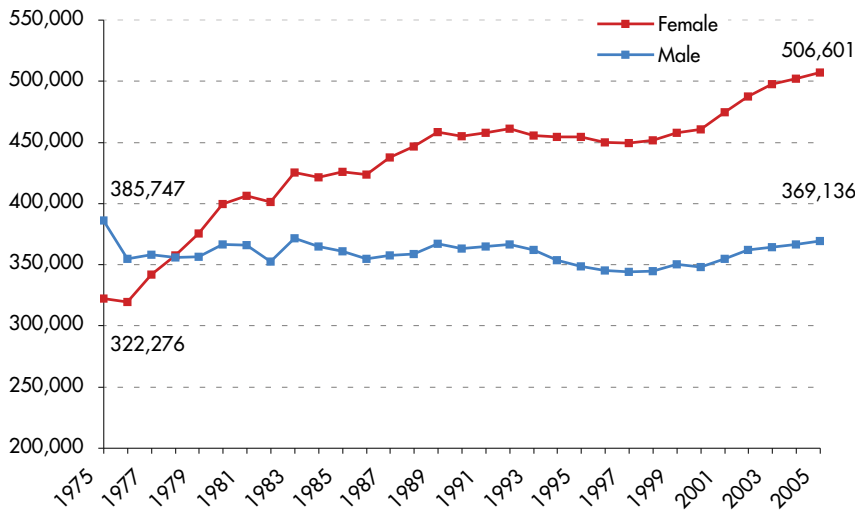
Source: New England Board of Higher Education analysis of U.S. Department of Education data.

Fig. 22: Full-Time vs. Part-Time College Enrollment in New England, 1995 to 2005



Source: New England Board of Higher Education analysis of U.S. Department of Education data.

Fig. 23: Total Higher Education Enrollment by Gender in New England, 1975 to 2005



Source: New England Board of Higher Education analysis of U.S. Department of Education data.

Fig. 24: New England Institutions with the Largest Undergraduate Enrollments, Fall 2005

Institution Name	Full-time	Part-time	Total
University of Massachusetts Amherst	18,054	1,340	19,394
Boston University	17,384	1,310	18,694
Northeastern University	14,730	3,063	17,793
University of Connecticut	15,296	816	16,112
Community College of Rhode Island	5,765	10,277	16,042
University of Rhode Island	9,766	1,780	11,546
University of New Hampshire	10,911	603	11,514
Boston College	9,561	400	9,961
University of Vermont	8,652	1,207	9,859
Harvard University	7,097	2,628	9,725
Central Connecticut State University	7,445	2,233	9,678
Johnson & Wales University	8,399	938	9,337
University of Maine	7,617	1,562	9,179
University of Massachusetts Boston	5,768	3,190	8,958
University of Southern Maine	4,788	3,834	8,622
University of Massachusetts Lowell	5,695	2,614	8,309
Southern Connecticut State University	6,697	1,612	8,309
Middlesex Community College (Mass.)	3,453	4,555	8,008
Bridgewater State College	6,435	1,416	7,851
Bunker Hill Community College	2,388	5,449	7,837
University of Massachusetts Dartmouth	6,449	1,070	7,519
Rhode Island College	5,310	2,167	7,477
Salem State College	5,468	1,828	7,296
Bristol Community College	3,097	3,776	6,873
Massasoit Community College	3,207	3,499	6,706
Total 25 Largest Institutions	194,315	65,617	259,932

Source: New England Board of Higher Education analysis of U.S. Department of Education data.

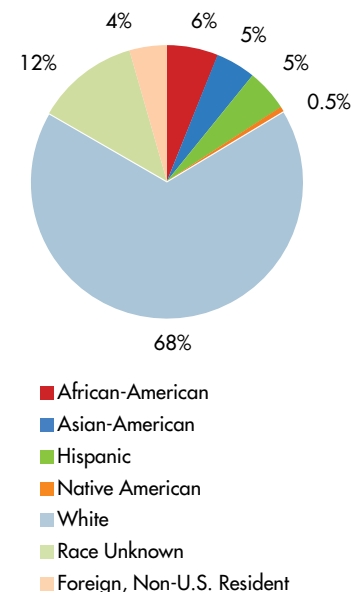
Fig. 25: New England Cities with the Largest Total College Enrollments, 2005

City	Number of Colleges & Universities	Total Enrollment
Boston, Mass.	33	135,314
Cambridge, Mass.	8	52,960
Providence, R.I.	5	46,200
New Haven, Conn.	4	32,694
Amherst, Mass.	3	28,110
Storrs, Conn.	1	28,083
Worcester, Mass.	8	26,764
Newton, Mass.	6	19,210
Warwick, R.I.	2	19,145
Lowell, Mass.	2	18,674
Springfield, Mass.	4	17,026
Kingston, R.I.	1	15,095
Burlington, Vt.	4	14,764
Durham, N.H.	1	14,564
New Britain, Conn.	2	14,217
Manchester, N.H.	6	13,712
Portland, Maine	4	11,541
Waltham, Mass.	2	10,754
Wellesley, Mass.	3	10,556
Medford, Mass.	1	10,441

Note: Total enrollment includes full- and part-time undergraduate, graduate and non-degree students.

Source: New England Board of Higher Education Annual Survey of New England Colleges and Universities, 2006.

Fig. 26: Enrollment at New England Colleges and Universities by Race/Ethnicity, 2005



Source: New England Board of Higher Education analysis of U.S. Department of Education data.

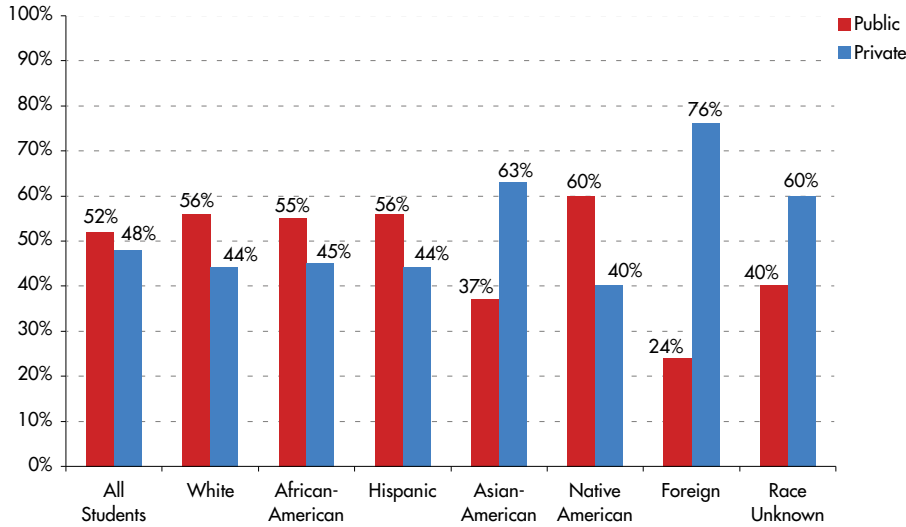
Fig. 27: Minority Enrollment by State and Race/Ethnicity, 1995 and 2005

		Enrolled Students				As % of 18- to 24-Year-Old Population 2005	% Change in Enrollment 1995-2005
		1995	% of Total	2005	% of Total		
Connecticut	African-American	11,695	7.4%	17,107	9.7%	12%	46%
	Asian-American	5,433	3.4%	7,139	4.1%	3	31
	Hispanic	7,914	5.0%	13,217	7.5%	15	67
	Native American	523	0.3%	637	0.4%	1	22
	White	121,955	76.8%	116,797	66.5%	63	-4
	Race Unknown	5,706	3.6%	14,365	8.2%	NA	152
Maine	African-American	329	0.6%	967	1.5%	1	194
	Asian-American	683	1.2%	955	1.5%	1	40
	Hispanic	279	0.5%	688	1.1%	1	147
	Native American	609	1.1%	921	1.4%	1	51
	White	41,468	74.8%	55,664	84.9%	95	34
	Race Unknown	11,487	20.7%	5,082	7.8%	NA	-56
Massachusetts	African-American	19,888	4.8%	29,724	6.7%	7	50
	Asian-American	21,284	5.1%	27,289	6.2%	6	28
	Hispanic	15,597	3.8%	23,520	5.3%	10	51
	Native American	1,387	0.3%	1,623	0.4%	0.3	17
	White	278,215	67.2%	273,027	61.6%	71	-2
	Race Unknown	53,292	12.9%	61,764	13.9%	NA	16
New Hampshire	African-American	635	1.1%	1,132	1.6%	1	78
	Asian-American	859	1.4%	1,524	2.2%	2	77
	Hispanic	658	1.1%	1,415	2.0%	1	115
	Native American	215	0.4%	314	0.4%	1	46
	White	46,405	77.3%	52,419	75.0%	93	13
	Race Unknown	10,037	16.7%	11,436	16.4%	NA	14
Rhode Island	African-American	2,962	4.0%	4,232	5.2%	6	43
	Asian-American	2,455	3.3%	2,970	3.6%	4	21
	Hispanic	2,536	3.4%	4,546	5.6%	12	79
	Native American	236	0.3%	306	0.4%	1	30
	White	56,926	76.2%	55,854	68.6%	71	-2
	Race Unknown	7,063	9.5%	10,781	13.2%	NA	53
Vermont	African-American	336	1.0%	654	1.6%	1	95
	Asian-American	484	1.4%	806	2.0%	1	67
	Hispanic	405	1.2%	760	1.9%	2	88
	Native American	137	0.4%	237	0.6%	1	73
	White	30,151	87.0%	33,597	84.2%	95	11
	Race Unknown	2,351	6.8%	3,060	7.7%	NA	30
New England	African-American	35,845	4.4%	53,816	6.1%	7	50
	Asian-American	31,198	3.8%	40,683	4.6%	4	30
	Hispanic	27,389	3.3%	44,146	5.0%	10	61
	Native American	3,107	0.4%	4,038	0.5%	0.4	30
	White	575,120	70.2%	587,358	68.0%	74	2
	Race Unknown	89,936	11.0%	106,488	12.2%	NA	18
United States	African-American	1,473,700	10.3%	2,164,683	12.5%	12	47
	Asian-American	797,400	5.6%	1,108,693	6.4%	4	39
	Hispanic	1,093,800	7.7%	1,809,593	10.5%	15	65
	Native American	131,300	0.9%	176,138	1.0%	1	34
	White	10,311,200	72.3%	11,422,770	66.1%	68%	11%

Note: Table does not include enrollment at military academies. African-American, Asian-American, Native American and White totals reflect non-Hispanic population. Does not include the category non-resident alien. United States data for 2004.

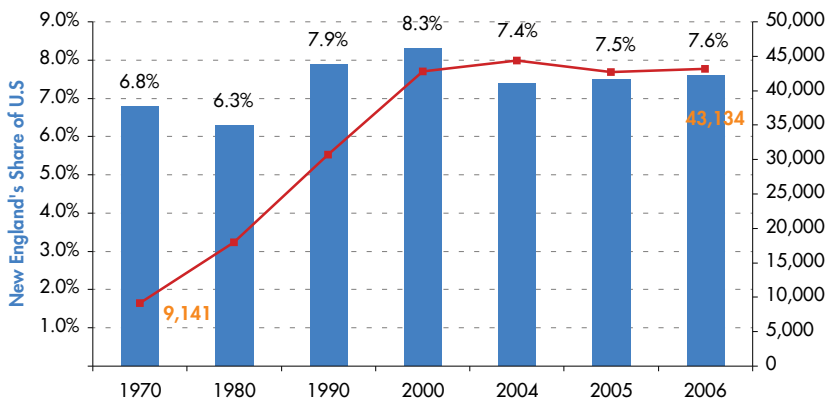
Source: New England Board of Higher Education analysis of U.S. Department of Education data.

Fig. 28: Public vs. Private College Enrollment in New England by Race/Ethnicity, 2005



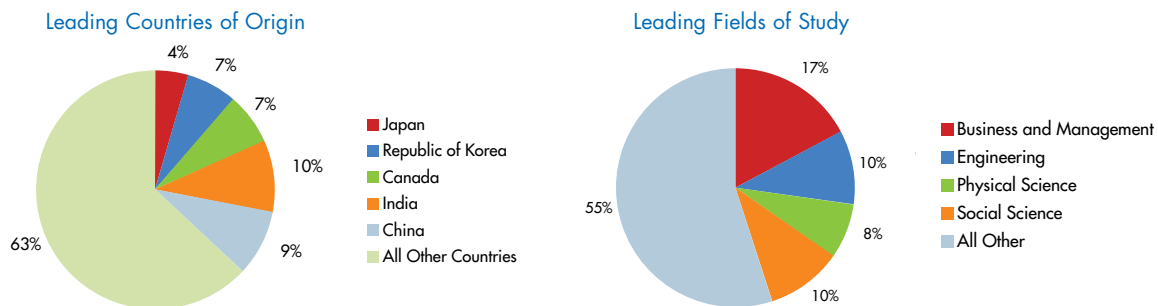
Source: New England Board of Higher Education analysis of U.S. Department of Education data.

Fig. 29: Foreign Enrollment at New England Colleges and Universities and Share of U.S. Foreign Enrollment, 1970 to 2006



Source: New England Board of Higher Education analysis of Institute of International Education data; www.iie.org.

Fig. 30: Foreign Students in New England by Countries of Origin and Fields of Study, 2006



Source: New England Board of Higher Education analysis of Institute of International Education data; www.iie.org.

For more trends and indicators, visit www.nebhe.org/research.

Fig. 31: Estimated Economic Impact from International Students, 2005-06

	Number of Foreign Students	Tuition & Fees	Living Expenses & Dependents	U.S. Funding	Total Contribution Minus U.S. Support
Connecticut	7,185	\$163,702,490	\$150,910,126	\$111,438,463	\$203,174,153
Maine	1,474	27,861,598	22,239,242	15,362,472	34,738,368
Massachusetts	28,007	718,149,959	653,638,136	502,804,385	868,983,710
New Hampshire	2,031	49,581,656	41,657,911	30,137,483	61,102,084
Rhode Island	3,477	81,659,964	70,220,672	40,541,771	111,338,866
Vermont	960	27,789,625	16,780,660	12,945,316	31,624,970
New England	43,134	\$1,068,745,291	\$955,446,747	\$713,229,890	\$1,310,962,149
United States	564,766	\$9,444,000,000	\$10,511,000,000	\$6,463,000,000	\$13,492,000,000

Source: New England Board of Higher Education analysis of Institute of International Education data; www.iie.org.

Fig. 32: New England Institutions Enrolling More than 1,000 Foreign Students, 2006

U.S. Rank	Institution	Foreign Enrollment	Total Enrollment	Foreign Students as a % of Total Enrollment
8th	Boston University	4,542	30,957	15%
15th	Harvard University	3,669	25,017	15
30th	Massachusetts Institute of Technology	2,736	10,206	27
51st	Yale University	2,019	11,483	18
54th	Northeastern University	1,980	22,604	9
65th	University of Massachusetts Amherst	1,843	25,093	7
80th	University of Connecticut	1,599	23,185	7
118th	Johnson & Wales	1,200	23,185	5
132nd	University of Bridgeport	1,093	3,626	30
140th	Brown University	1,025	8,261	12
Total of Above Institutions		21,706	183,617	12%
Total of All New England Institutions		43,134	875,737	5%
Above Institutions as a Share of All New England Institutions		50%	21%	

Source: New England Board of Higher Education analysis of Institute of International Education data; www.iie.org.

Fig. 33: New England Institutions with More than 10% of Undergraduates Studying Abroad, 2005

Institution	Undergraduates Studying Abroad	Total Undergraduate Enrollment	Percentage of Students Studying Abroad
Bates College	308	1,743	18%
Middlebury College	410	2,455	17
Smith College	399	2,642	15
Dartmouth College	565	4,110	14
Bowdoin College	217	1,666	13
Tufts University	647	5,051	13
Connecticut College	242	1,900	13
Wesleyan University	323	2,700	12
Mount Holyoke College	251	2,100	12
Trinity College	254	2,137	12
Williams College	232	2,000	12
Wheaton College	175	1,550	11
Gordon College	185	1,700	11
Worcester Polytechnic Institute	302	2,851	11

Source: New England Board of Higher Education analysis of Institute for International Education data; www.iie.org.

COLLEGE SUCCESS

Only 22 percent of students graduate from New England community colleges within three years of starting—and substantial gaps exist among racial/ethnic groups. And just 45 percent graduate from New England four-year state colleges (excluding land grants) within six years.

Fig. 34: Graduation Rates by State, Race/Ethnicity and Type of Institution, 2005

	Foreign	Black, non-Hispanic	American Indian or Alaskan Native	Asian or Pacific Islander	Hispanic	White, non-Hispanic	Race/Ethnicity Unknown	Total
Public Two-Year								
Connecticut	36%	9%	14%	11%	9%	15%	13%	13%
Maine	47	19	24	26	19	35	27	33
Massachusetts	24	10	11	13	10	20	14	18
New Hampshire	NA	4	NA	6	4	31	18	29
Rhode Island	33	7	13	9	7	10	9	10
Vermont	10	NA	NA	NA	NA	60	2	21
New England	26	16	23	16	11	23	14	22
Public Four-Year								
Connecticut	33	34	43	35	30	41	34	39
Maine	56	33	20	50	50	48	46	56
Massachusetts	50	39	59	42	31	50	41	50
New Hampshire	40	43	33	54	17	53	48	40
Rhode Island	50	27	50	35	23	48	38	50
Vermont	NA	NA	17	25	43	47	28	NA
New England	48	36	37	40	30	47	39	45
Public Land Grant								
Connecticut	59	57	67	71	71	73	73	72
Maine	55	44	30	33	39	54	NA	53
Massachusetts	74	56	45	62	60	67	61	66
New Hampshire	53	65	100	57	68	74	61	73
Rhode Island	14	42	67	56	43	58	49	56
Vermont	69	75	25	82	67	65	63	65
New England	60	55	45	63	59	66	61	65
Private Four-Year								
Connecticut	76	63	79	82	66	70	73	74
Maine	77	72	73	86	60	72	50	73
Massachusetts	72	64	65	83	72	74	72	74
New Hampshire	71	76	72	85	79	66	69	68
Rhode Island	82	65	68	86	77	67	81	76
Vermont	86	53	69	79	62	70	40	67
New England	74%	64%	69%	83%	71%	74%	71%	74%

Note: The graduation rate is the percentage of students who complete an associate degree (at two-year institutions) within three years or a bachelor's degree (at four-year institutions) within six years.

Source: New England Board of Higher Education analysis of U.S. Department of Education data.

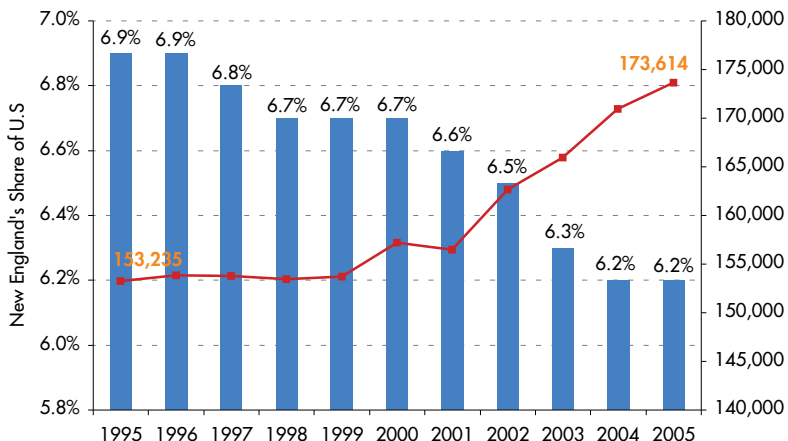
Fig. 35: Graduation and Transfer Rates by State and Type of Institution, 2005

	Public Two-Year		Public Four-Year		Public Land Grant		Private Four-Year	
	% Graduating	% Transferring to other Institutions	% Graduating	% Transferring to other Institutions	% Graduating	% Transferring to other Institutions	% Graduating	% Transferring to other Institutions
Connecticut	13%	17%	39%	5%	72%	20%	74%	12%
Maine	33	11	56	17	53	NA	73	3
Massachusetts	18	20	50	16	66	NA	74	16
New Hampshire	29	NA	40	NA	73	NA	68	2
Rhode Island	10	22	50	NA	56	NA	76	3
Vermont	21	5	NA	NA	65	NA	67	3
New England	22%	20%	45%	6%	65%	NA	74%	13%

Note: The graduation rate is the percentage of students who complete an associate degree (at two-year institutions only) within three years or a bachelor's degree (at four-year institutions) within six years. Figures are based on cohorts entering in 1999 (four-year institutions) or 2002 (two-year institutions). New England figures are based on the aggregate numbers of all institutions of a given type, rather than an average of the states' graduation rates.

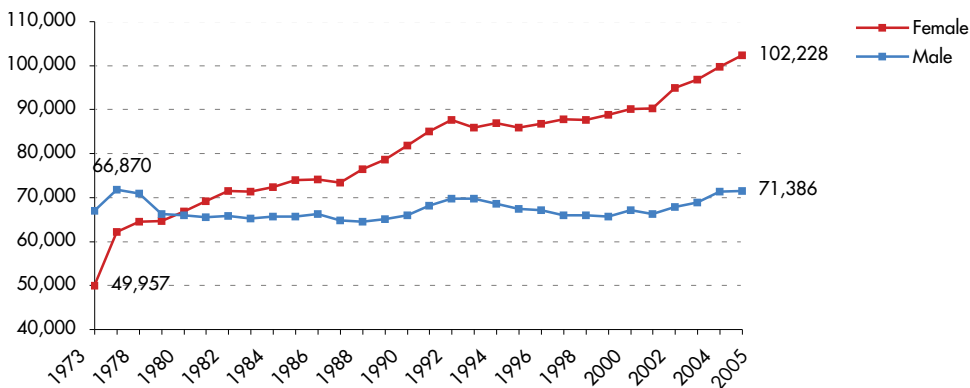
Source: New England Board of Higher Education analysis of U.S. Department of Education data.

Fig. 36: Total Degrees Awarded at New England's Colleges and Universities and New England's Share of U.S. Degrees, 1995 to 2005



Source: New England Board of Higher Education analysis of U.S. Department of Education data.

Fig. 37: Degrees Awarded in New England by Gender, 1973 to 2005

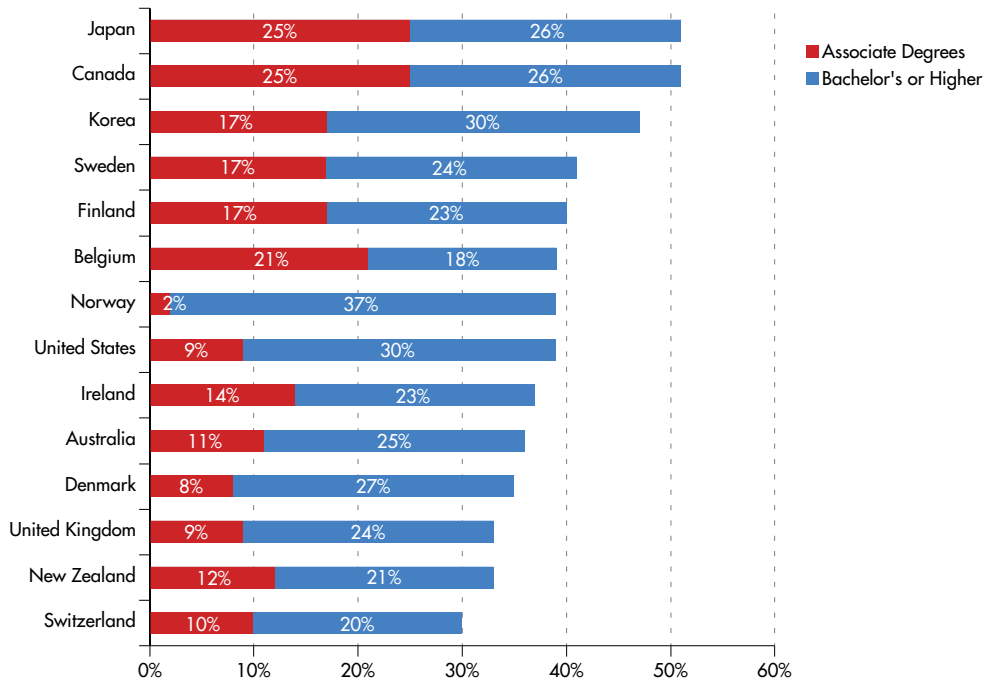


Source: New England Board of Higher Education analysis of U.S. Department of Education data.



For more trends and indicators, visit www.nebhe.org/research.

Fig. 38: Percentage of 25- to 34-Year-Olds with Postsecondary Degrees: International Comparison, 2003



Note: Figure reflects only OECD-member countries, which include 23 European countries as well as Australia, Canada, Japan, Korea, Mexico, New Zealand and the United States.
Source: Organisation for Economic Co-operation and Development.

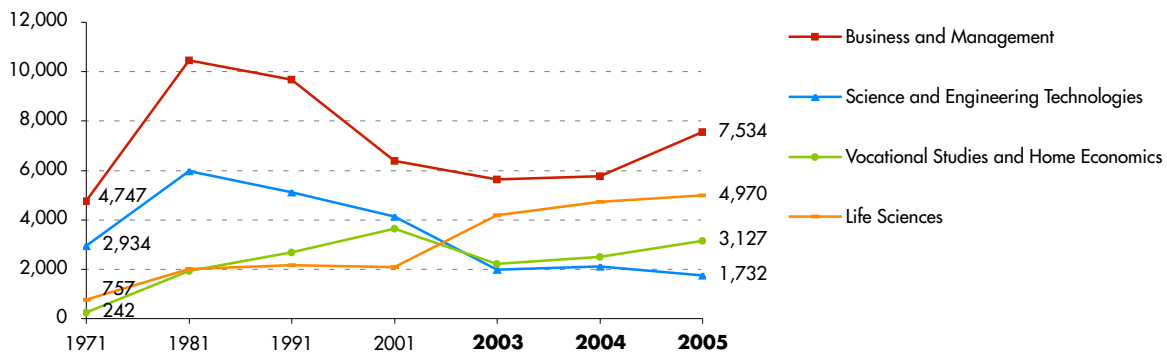
Fig. 39: Associate Degrees Awarded to Men, Women, Minorities and Foreign Students, 2005

	Total	Men	Women	Foreign	African-American	Native American	Asian	Hispanic	White	Race Unknown
Connecticut	5,022	1,665	3,357	112	681	25	115	507	3,332	250
Maine	2,374	863	1,511	17	17	32	15	15	2,167	111
Massachusetts	11,595	4,193	7,402	523	942	47	446	687	7,899	1,051
New Hampshire	3,498	1,275	2,223	21	58	11	42	88	2,852	426
Rhode Island	3,573	1,663	1,910	102	234	6	103	214	2,638	276
Vermont	1,271	506	765	6	12	10	22	15	1,120	86
New England	27,333	10,165	17,168	781	1,944	131	743	1,526	20,008	2,200
% of New England Associate Degrees		37%	63%	3%	7%	0.5%	3%	6%	73%	8%

Source: New England Board of Higher Education analysis of U.S. Department of Education data.

Fig. 40: Associate Degrees Awarded at New England Colleges and Universities Showing Selected Fields of Study, 1971 to 2005

Total Associate Degrees Awarded 1971: 16,782; 2005: 27,333



Note: Disciplines not listed include: Arts and Music, Education, Social Service Professions, Communication and Librarianship, Engineering, Psychology, Social Sciences, Geosciences, Law, Interdisciplinary or other Sciences, Physical Sciences, Architecture and Environmental Design, Humanities, Religion and Theology, Math and Computer Sciences and unknown disciplines. These unlisted disciplines awarded 9,970 degrees in 2005.

Source: New England Board of Higher Education analysis of U.S. Department of Education data.

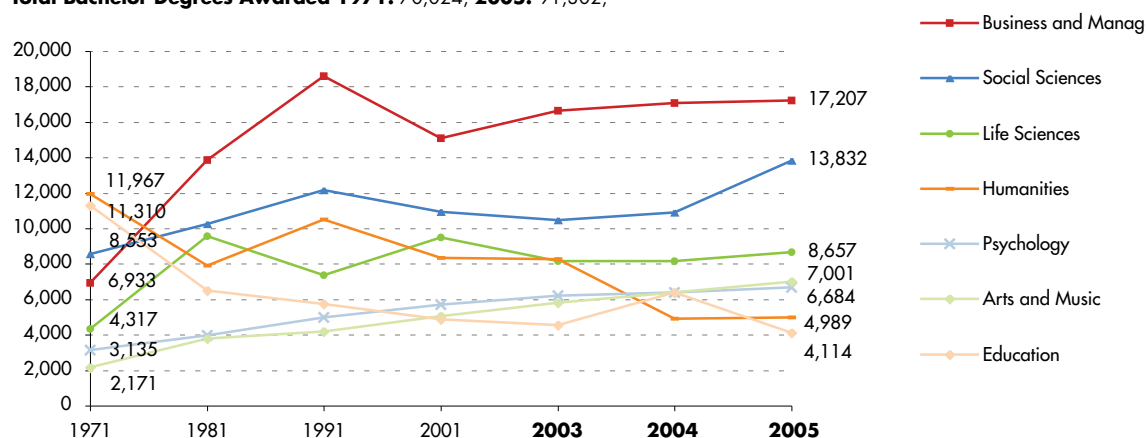
Fig. 41: Bachelor's Degrees Awarded to Men, Women, Minorities and Foreign Students, 2005

	Total	Men	Women	Foreign	African-American	Native American	Asian	Hispanic	White	Race Unknown
Connecticut	16,617	7,027	9,590	523	1,116	74	729	824	12,138	1,213
Maine	6,500	2,635	3,865	513	70	50	110	66	5,477	214
Massachusetts	45,714	19,115	26,599	2,209	2,432	172	3,265	1,965	30,410	5,261
New Hampshire	8,107	3,425	4,682	162	154	47	260	165	6,404	915
Rhode Island	9,472	4,070	5,402	265	424	34	449	354	6,929	1,017
Vermont	4,892	2,163	2,729	99	53	13	106	101	4,237	283
New England	91,302	38,435	52,867	3,771	4,249	390	4,919	3,475	65,595	8,903
% of New England Bachelor's Degrees		42%	58%	4%	5%	0.4%	5%	4%	72%	10%

Source: New England Board of Higher Education analysis of U.S. Department of Education data.

Fig. 42: Bachelor's Degrees Awarded at New England Colleges and Universities by Selected Fields of Study, 1971 to 2005

Total Bachelor Degrees Awarded 1971: 70,024; 2005: 91,302;



Note: Disciplines not listed include: Communication and Librarianship, Math and Computer Sciences, Engineering, Vocational Studies and Home Economics, Science and Engineering Technologies, Social Service Professions, Physical Sciences, Architecture and Environmental Design, Geosciences, Religion and Theology, Interdisciplinary or other Science, Law and unknown disciplines. These unlisted disciplines awarded 28,818 degrees in 2005.

Source: New England Board of Higher Education analysis of U.S. Department of Education data.

Fig. 43: Master's Degrees Awarded to Men, Women, Minorities and Foreign Students, 2005

	Total	Men	Women	Foreign	African-American	Native American	Asian	Hispanic	White	Race Unknown
Connecticut	8,851	3,516	5,335	1,192	428	17	334	286	5,678	916
Maine	1,648	473	1,175	60	8	10	7	16	1,420	127
Massachusetts	27,663	11,080	16,583	3,894	1,468	93	1,420	856	14,443	5,489
New Hampshire	2,751	1,132	1,619	330	32	6	78	43	1,803	459
Rhode Island	2,223	896	1,327	372	63	7	61	55	1,396	269
Vermont	1,684	665	1,019	121	38	10	33	37	1,170	275
New England	44,820	17,762	27,058	5,969	2,037	143	1,933	1,293	25,910	7,535
% of New England Master's Degrees		40%	60%	13%	5%	0.3%	4%	3%	58%	17%

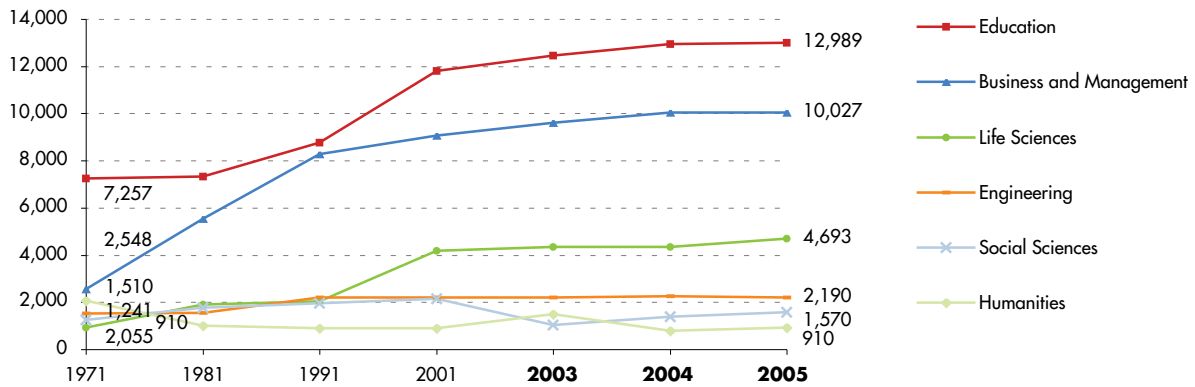
Source: New England Board of Higher Education analysis of U.S. Department of Education data.



For more trends and indicators, visit www.nebhe.org/research.

Fig. 44: Master's Degrees Awarded at New England Colleges and Universities by Selected Fields of Study, 1971 to 2005

Total Masters Degrees Awarded: 1971: 19,113; 2005: 44,820;



Note: Disciplines not listed include: Physical Science, Geosciences, Math and Computer Science, Psychology, Science and Engineering Technologies, Interdisciplinary or other Sciences, Religion and Theology, Arts and Music, Architecture and Environmental Design, Communication and Librarianship, Law, Social Service Professions, Vocational Studies and Home Economics, unknown Disciplines. These unlisted disciplines awarded 12,441 degrees in 2005.

Source: New England Board of Higher Education analysis of U.S. Department of Education data.

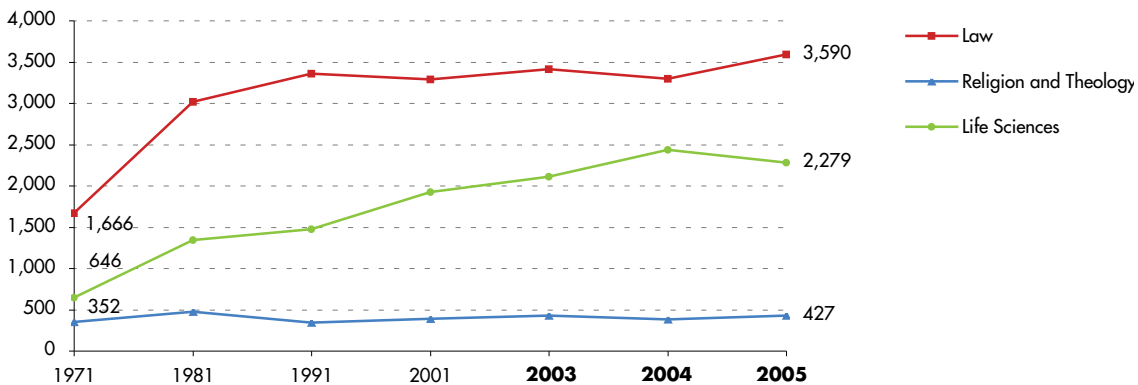
Fig. 45: First-Professional Degrees Awarded to Men, Women, Minorities and Foreign Students, 2005

	Total	Men	Women	Foreign	African-American	Native American	Asian	Hispanic	White	Race Unknown
Connecticut	1,014	541	473	23	58	4	82	47	764	36
Maine	217	81	136	0	2	1	9	1	200	4
Massachusetts	4,305	2,082	2,223	158	249	13	657	175	2,581	472
New Hampshire	183	103	80	8	3	0	14	8	133	17
Rhode Island	318	142	176	5	15	1	29	13	214	41
Vermont	259	110	149	1	10	0	25	9	205	9
New England	6,296	3,059	3,237	195	337	19	816	253	4,097	579
% of New England First-Professional Degrees		49%	51%	3%	5%	0.3%	13%	4%	65%	9%

Source: New England Board of Higher Education analysis of U.S. Department of Education data.

Fig. 46: First-Professional Degrees Awarded at New England Colleges and Universities by Fields of Study, 1971 to 2005

Total First-Professional Degrees Awarded: 1971: 2,664; 2005: 6,696



Source: New England Board of Higher Education analysis of U.S. Department of Education data.



For more trends and indicators, visit www.nebhe.org/research.

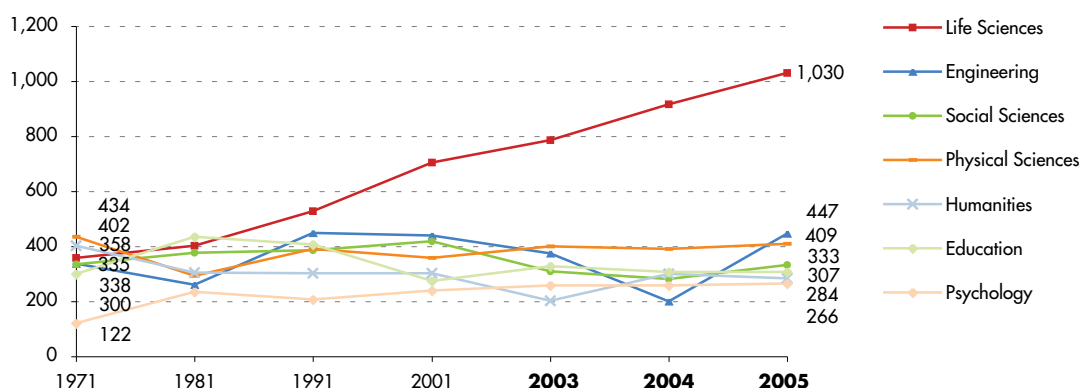
Fig. 47: Doctorates Awarded to Men, Women, Minorities and Foreign Students, 2005

	Total	Men	Women	Foreign	African-American	Native American	Asian	Hispanic	White	Race Unknown
Connecticut	675	318	357	233	17	1	26	19	288	91
Maine	40	21	19	10	0	0	0	0	30	0
Massachusetts	2,676	1,391	1,285	776	71	7	123	62	1,264	373
New Hampshire	167	87	80	31	2	0	12	1	112	9
Rhode Island	243	123	120	88	7	1	8	5	65	69
Vermont	62	25	37	9	0	0	1	0	50	2
New England	3,863	1,965	1,898	1,147	97	9	170	87	1,809	544
% of New England Doctorates		51%	49%	30%	3%	0.2%	4%	2%	47%	14%

Source: New England Board of Higher Education analysis of U.S. Department of Education data.

Fig. 48: Doctorates Awarded at New England Colleges and Universities by Selected Fields of Study, 1971 to 2005

Total Bachelor Degrees Awarded 1971: 2,624; 2005: 3,863;



Note: Disciplines not listed include: Geosciences, Math and Computer Science, Science and Engineering Technologies, Interdisciplinary or other Sciences, Religion and Theology, Arts and Music, Architecture and Environmental Design, Business and Management, Communication and Librarianship, Law, Social Service Professions, Vocational Studies and Home Economics, unknown Disciplines. These unknown disciplines awarded 787 Degrees in 2005.

Source: New England Board of Higher Education analysis of U.S. Department of Education data.

FINANCING HIGHER EDUCATION

Total yearly charges for resident students, including room and board, average nearly \$40,000 at New England's private four-year institutions and \$18,000 at the region's public institutions—far above national rates.

Fig. 49: Average Expenses, New England vs. the United States, Academic Year 2006-07

	Tuition & Fees for State Residents	Additional Charges for Out-of-State Residents	Books & Supplies	Resident			Commuter		
				Room & Board	Transportation	Other	Room & Board	Transportation	Other
New England									
Two-year public	\$3,363	\$6,143	\$779	NA	NA	NA	\$6,251	\$1,108	\$1,600
Four-year public	7,658	11,128	848	7,611	522	1,257	6,495	923	1,493
Four-year private	28,386	NA	896	9,726	573	1,141	8,132	871	1,223
United States									
Two-year public	\$2,272	\$4,208	\$850	NA	NA	NA	\$6,299	\$1,197	\$1,676
Four-year public	5,836	9,947	942	6,960	880	1,739	6,917	1,224	2,048
Four-year private	22,218	NA	935	8,149	722	1,277	7,211	1,091	1,630

Note: Room & board costs for commuter students are average estimated living expenses for students living off-campus but not with parents.

Source: Table 5, Average Student Expenses, by College Board Region, 2006-2007 (Enrollment-Weighted). Trends in College Pricing 2006. Copyright © 2006 College Entrance Examination Board. Reprinted with permission. All rights reserved. www.collegeboard.com.

Fig 50: Tuition and Mandatory Fees, Academic Years 2005-06 and 2006-07 with Percent Change

	2005-06	2006-07	Percent Change		2005-06	2006-07	Percent Change
Connecticut				New Hampshire			
Two-year public	\$2,536	\$2,672	5%	Two-year public	\$5,195	\$5,207	0.2%
Four-year public	6,758	7,140	6	Four-year public	8,569	9,114	6
Four-year private	26,971	28,525	6	Four-year private	25,520	26,881	5
Maine				Rhode Island			
Two-year public	2,814	3,060	9	Two-year public	2,470	2,686	9
Four-year public	6,082	6,583	8	Four-year public	6,371	6,756	6
Four-year private	24,714	25,914	5	Four-year private	25,091	26,400	5
Massachusetts				Vermont			
Two-year public	3,543	3,586	1	Two-year public	4,990	5,230	5
Four-year public	7,262	7,585	4	Four-year public	9,298	9,800	5
Four-year private	27,795	29,335	6%	Four-year private	24,393	25,593	5%

Note: Figures for public institutions show rates for state residents. All data are enrollment-weighted averages, intended to reflect the average costs that students face in various types of institutions.

Source: Table 6, Tuition and Fees by Region and Institution Type, in Current Dollars, 1994-1995 to 2005-2007 (Enrollment-Weighted). *Trends in College Pricing 2006*, Copyright © 2006 The College Board. Reprinted with permission. All rights reserved. www.collegeboard.com.

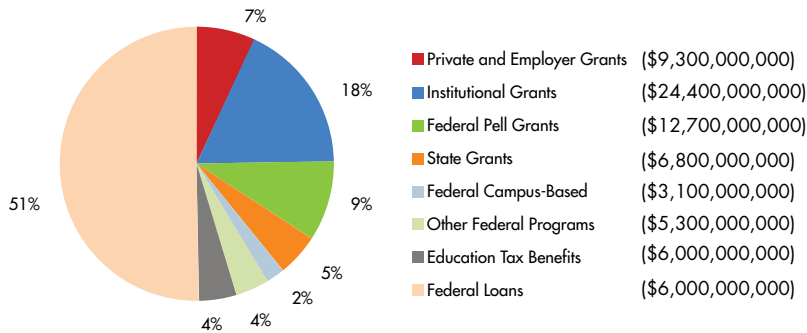
Americans pay an average of \$242 each in annual state taxes to support public higher education and student aid in their states. New Englanders, however, pay just \$177.

Fig. 51: Appropriations of State Tax Funds for Higher Education Operating Expenses, Fiscal 2007

	Appropriations	1-Year % Change	10-Year % Change	Per-Capita Appropriations	U. S. Rank 2007	Appropriations Per \$1,000 of Personal Income	U.S. Rank 2007	FY05 Appropriations Per FTE Student	U. S. Rank 2005
Connecticut	\$883,116,000	6%	63%	\$251.97	23rd	\$4.98	42nd	\$9,150	7th
Maine	259,089,000	4	42	196.05	38th	6.05	32nd	5,982	28th
Massachusetts	996,025,000	3	21	154.73	46th	3.35	49th	7,712	15th
New Hampshire	123,966,000	6	49	94.28	50th	2.36	50th	3,296	49th
Rhode Island	184,466,000	3	45	172.78	45th	4.61	45th	6,169	30th
Vermont	85,217,000	4	55	136.59	49th	3.98	47th	3,019	50th
New England	2,531,879,000	4	39	177.4		4.01		7,025	
United States	\$72,183,609,000	7%	55%	\$241.56		\$6.59		\$5,833	

Note: FY05 appropriations per FTE data obtained via NCHEMS Information Center; www.higheredinfo.org/analyses.

Source: New England Board of Higher Education analysis of data from Illinois State University Center for Higher Education and Education Finance; www.coe.ilstu.edu/grapevine.

Fig. 52: Estimated Student Aid by Source, United States, Academic Year 2005-06

Source: Trends in Student Aid. Copyright ©2006 The College Board. All rights reserved; www.collegeboard.com.

Fig. 53: Federal Student Financial Aid Programs-Total Expenditures or Allocations and Number of Recipients

	Pell Grants		College Work-Study		Perkins Loans		Supplemental Educational Opportunity Grants	
	2004-05 Expenditures	2005 Total Recipients	2006-07 Allocations	2005 Total Recipients	2006-07 Allocations	2005 Total Recipients	2006-07 Allocations	2005 Total Recipients
Connecticut	\$85,784,175	38,071	\$10,992,259	9,858	\$27,718,005	7,769	\$8,594,479	13,290
Maine	52,487,447	21,698	7,921,003	6,910	19,977,371	8,133	6,892,992	11,071
Massachusetts	179,657,875	76,150	44,986,492	37,976	117,061,371	39,510	29,744,752	40,318
New Hampshire	31,368,834	14,209	6,689,631	6,664	15,485,287	6,786	5,296,006	8,689
Rhode Island	30,920,528	13,694	7,948,842	7,112	29,377,750	10,745	7,075,045	13,330
Vermont	21,073,898	9,202	5,777,589	5,751	13,906,418	5,985	5,302,910	5,324
New England	401,292,757	173,024	84,315,816	74,271	223,526,202	78,928	62,906,184	92,022
United States	\$13,149,939,760	5,308,433	\$973,980,287	810,803	\$2,090,942,986	748,735	\$770,750,080	1,408,652
New England as a % of United States	3.1%	3.3%	8.7%	9.2%	11%	10.5%	8.2%	6.5%

Note: Spending on federal campus-based programs is reported as 2006-07 allocations. Spending on Pell Grants is reported as 2004-05 expenditures. For Perkins loans, a school must request and have approved for each award year a "level of expenditure" authorization that represents the maximum amount it may expend from its revolving Federal Perkins Loan fund.

Source: New England Board of Higher Education analysis of U.S. Department of Education data.

Fig. 54: Total Grant Aid Awarded by State, 1994-95, 1999-00, 2003-04, 2004-05

	1994-95	1999-00	2003-04	2004-05	5-Year % Change	10-Year % Change
Connecticut	\$20,905,000	\$37,401,000	\$36,773,000	\$36,773,000	-2%	76%
Maine	7,090,000	10,852,000	12,561,000	12,984,000	20	83
Massachusetts	61,945,000	103,301,000	79,735,000	79,526,000	-23	28
New Hampshire	1,493,000	1,506,000	3,653,000	3,648,000	142	144
Rhode Island	6,340,000	6,098,000	12,296,000	13,945,000	129	120
Vermont	11,984,000	13,997,000	18,177,000	16,884,000	21	41
New England	\$109,757,000	\$173,155,000	\$163,195,000	\$163,760,000	-5%	49%
United States	2,868,941,000	4,150,033,000	6,166,416,000	6,684,049,000	61%	133%

Note: Figures may not include aid funds provided through entities other than the principal state student aid agency.

Source: National Association of State Student Grant and Aid Programs; www.nassgap.org



For more trends and indicators, visit www.nebhe.org/research.

Fig. 55: State Need-Based Aid as a Percent of Federal Pell Grant Aid, 2005

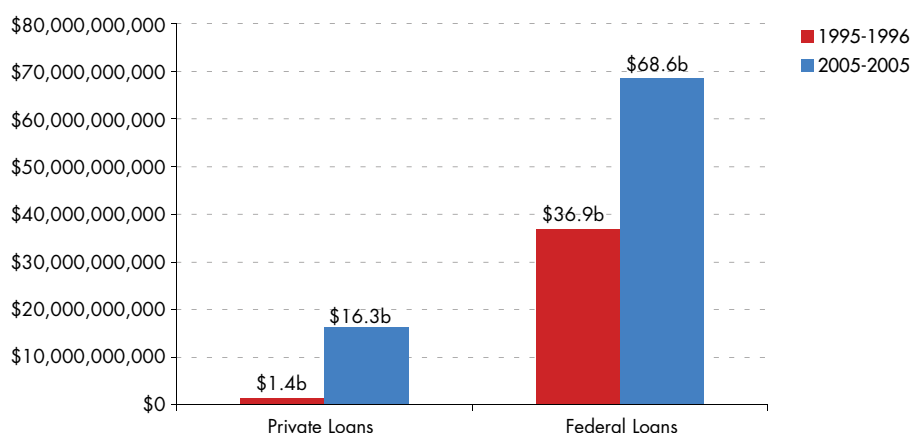
	State Need-Based Grant Total	Federal Pell Grant Total	State Need-Based Aid as a Percent of Federal Pell Grant Aid
Connecticut	\$36,433,000	\$85,784,175	43%
Maine	12,984,000	52,487,447	25
Massachusetts	79,503,000	179,657,875	44
New Hampshire	3,643,000	31,368,834	12
Rhode Island	13,821,000	30,920,528	45
Vermont	16,791,000	21,073,898	80
New England	\$163,175,000	\$401,292,757	41
United States	4,411,086,752	13,149,939,760	34%

Source: New England Board of Higher Education analysis of data from National Association of State Student Grant and Aid Programs; www.nassgap.org and U.S. Department of Education data.

Fig. 56: Percentage of Family Income Needed to Pay for College by Income Groups, 2005

	% of All Family Income Needed to Pay	% Lowest Income Quintile	% 2nd Income Quintile	% 3rd Income Quintile	% 4th Income Quintile	% Highest Income Quintile
Connecticut						
Public Two-Year	25%	66%	26%	16%	11%	7%
Public Four-Year	33	85	34	21	14	9
Private Four-Year	76	208	78	45	30	19
Maine						
Public Two-Year	30	73	34	21	14	9
Public Four-Year	37	86	40	27	18	11
Private Four-Year	78	205	85	49	32	21
Massachusetts						
Public Two-Year	25	64	27	16	11	6
Public Four-Year	34	88	37	23	15	9
Private Four-Year	83	225	89	50	32	19
New Hampshire						
Public Two-Year	29	70	31	20	14	9
Public Four-Year	33	79	35	23	16	10
Private Four-Year	60	152	65	39	27	17
Rhode Island						
Public Two-Year	30	77	32	20	13	8
Public Four-Year	39	98	41	26	17	11
Private Four-Year	85	227	91	53	34	22
Vermont						
Public Two-Year	31	74	34	22	14.7	9.2
Public Four-Year	41	98	45	30	20	12
Private Four-Year	65	166	71	42	28	18
United States						
Public Two-Year	24	58	27	17	11	7
Public Four-Year	31	73	34	23	15	9
Private Four-Year	72%	183%	78%	47%	31%	18%

Source: The National Center for Higher Education Management Systems (NCHEMS); www.higheredinfo.org.

Fig. 57: Private vs. Federal Student Loan Volume, 1995-96 and 2005-06

Source: Institute for Higher Education Policy (IHEP) analysis of College Board data.

Fig. 58: Average Student Debt at Public and Private Four-Year Institutions by State, Class of 2005

	All Four-Year		Public Four-Year		Private Four-Year	
	Average Debt	U.S. Rank	Average Debt	U.S. Rank	Average Debt	U.S. Rank
Connecticut	\$19,440	12th	\$15,787	37th	\$21,769	12th
Maine	20,239	7th	19,185	7th	22,284	9th
Massachusetts	18,169	21st	14,326	46th	19,953	28th
New Hampshire	22,793	1st	21,469	3rd	24,672	3rd
Rhode Island	20,798	4th	16,200	29th	22,216	10th
Vermont	19,482	11th	18,875	9th	20,564	21st

Source: New England Board of Higher Education analysis of data from The Project on Student Debt; www.projectstudentdebt.org.

Fig. 59: New England's Ten Largest College Endowments, Fiscal 2006

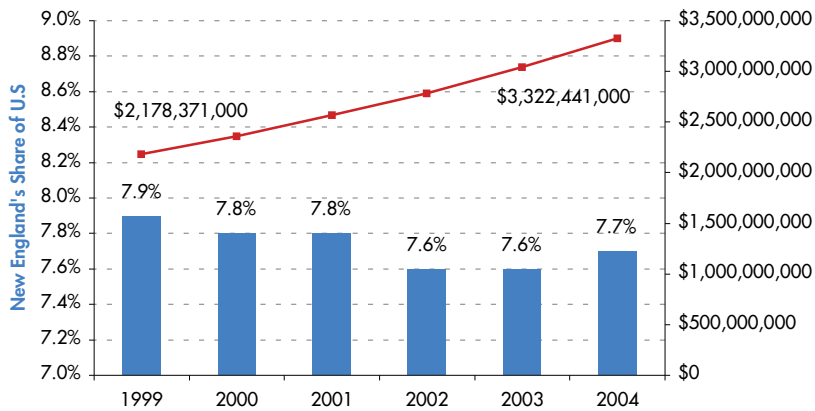
U.S. Rank	New England Rank	Institution	Market Value at End of Fiscal 2005	% Change from Fiscal 2004
1st	1st	Harvard University	\$28,915,706,000	14%
2nd	2nd	Yale University	18,030,600,000	18
6th	3rd	Massachusetts Institute of Technology	8,368,066,000	25
21st	4th	Dartmouth College	3,092,100,000	14
26th	5th	Brown University	2,166,633,000	18
37th	6th	Williams College	1,462,131,000	8
39th	7th	Boston College	1,447,887,000	14
42nd	8th	Wellesley College	1,412,410,000	11
44th	9th	Amherst College	1,337,158,000	16
51st	10th	Tufts University	1,215,413,000	44%

Source: New England Board of Higher Education analysis of National Association of College and University Business Officers data; www.nacubo.org.

UNIVERSITY RESEARCH

New England universities performed \$3.3 billion worth of research and development in 2004, and the region's share of all U.S. university R&D inched up to 7.7 percent—still a far cry from its 10 percent share in the mid-1980s.

Fig. 60: Research and Development Expenditures at New England's Universities and Colleges and New England's Share of U.S. R&D Expenditures, 1999 to 2004



Source: New England Board of Higher Education analysis of National Science Foundation data.

Fig. 61: Regional Comparison of Research and Development Expenditures at Universities and Colleges, 1999 and 2004

				Per-Capita Expenditures		Per-Capita U.S. Rank	
	1999	2004	5-Year % Change	1999	2004	1999	2004
East North Central	3,911,237,000	6,219,787,000	59%	\$86.6	\$134.4	7th	6th
East South Central	1,238,078,000	2,000,732,000	62	72.7	112.7	9th	9th
Middle Atlantic	3,981,819,000	6,377,413,000	60	100.4	157.6	3rd	2nd
Mountain	1,739,467,000	2,636,345,000	52	95.7	126.5	5th	7th
New England	2,178,371,000	3,322,441,000	53	156.5	232.8	1st	1st
Pacific	4,831,179,000	7,504,172,000	55	107.3	154.7	2nd	3rd
South Atlantic	5,166,764,000	8,092,097,000	57	99.8	141.6	4th	4th
West North Central	1,830,109,000	2,763,597,000	51	95.1	138.6	6th	5th
West South Central	2,557,262,000	3,914,651,000	53	81.3	114.5	8th	8th
United States	27,530,968,000	42,945,081,000	56%	\$97.8	\$143.4		

Source: New England Board of Higher Education analysis of National Science Foundation data; www.nsf.gov.



For more trends and indicators, visit www.nebhe.org/research.

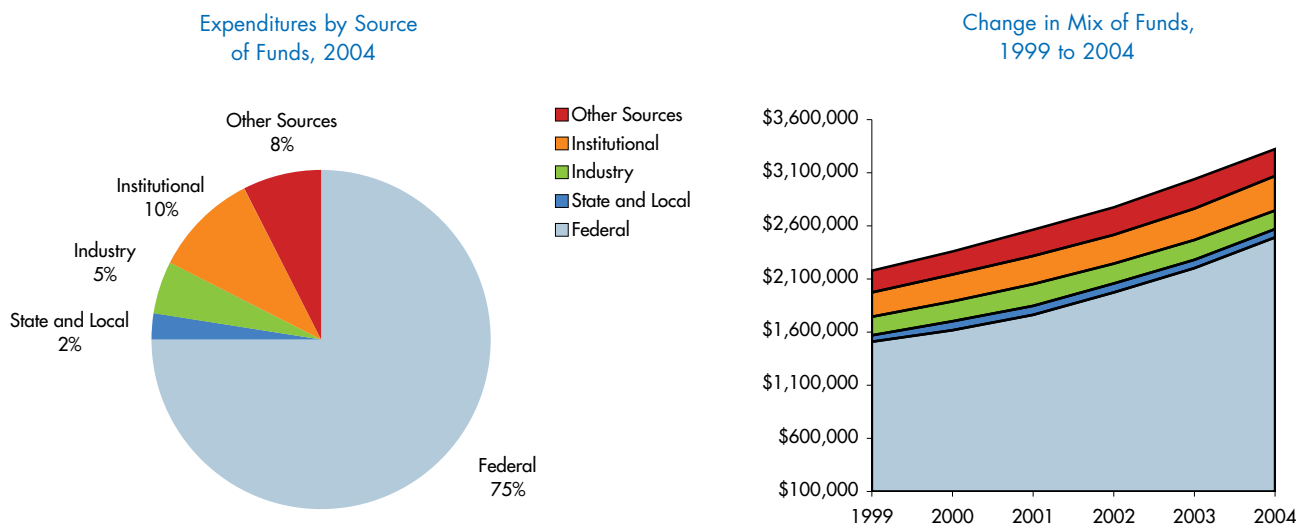
Fig. 62: Research and Development Expenditures at New England Universities and Colleges by Field, 2004

	Engineering	Physical Sciences	Environmental Sciences	Math and Computer Sciences
Connecticut	34,992,000	30,728,000	12,364,000	12,364,000
Maine	11,724,000	7,614,000	24,356,000	1,856,000
Massachusetts	331,064,000	252,105,000	164,309,000	100,258,000
New Hampshire	43,113,000	10,072,000	46,424,000	5,230,000
Rhode Island	24,725,000	13,828,000	32,339,000	14,149,000
Vermont	2,540,000	2,593,000	522,000	1,515,000
New England	448,158,000	316,940,000	280,314,000	135,372,000
United States	6,312,027,000	3,545,031,000	2,354,063,000	1,854,477,000
New England as a % of U.S.	7%	9%	12%	7%

	Life Sciences	Psychology	Social Sciences	Other Sciences	Total
Connecticut	521,682,000	22,984,000	13,583,000	966,000	649,663,000
Maine	33,706,000	1,338,000	5,436,000	1,323,000	87,353,000
Massachusetts	1,007,129,000	36,269,000	69,416,000	39,570,000	2,000,120,000
New Hampshire	147,033,000	6,408,000	5,365,000	13,556,000	277,201,000
Rhode Island	87,623,000	6,285,000	7,254,000	6,123,000	192,326,000
Vermont	100,613,000	848,000	232,000	6,915,000	115,778,000
New England	1,897,786,000	74,132,000	101,286,000	68,453,000	3,322,441,000
United States	25,650,300,000	782,481,000	1,669,746,000	776,956,000	42,945,081,000
New England as a % of U.S.	7%	10%	6%	9%	8%

Source: New England Board of Higher Education analysis of National Science Foundation data.

Fig. 63: Research and Development Expenditures at New England Universities and Colleges by Source of Funds, 1999 to 2004



Source: New England Board of Higher Education analysis of National Science Foundation data.

Fig. 64: Research and Development Expenditures at New England Colleges and Universities by U.S. Rank and Source of Funds, 2004

U.S. Rank	Institution	All R&D Expenditures	Federal Government	State and Local Government	Industry	Institutional Funds	All Other Sources
12th	Massachusetts Institute of Technology	\$543,448,000	\$427,552,000	\$185,000	\$72,227,000	\$11,854,000	\$31,630,000
28th	Harvard University	454,495,000	399,764,000	1,850,000	5,877,000	0	47,004,000
29th	Yale University	422,828,000	330,837,000	577,000	14,394,000	26,121,000	50,899,000
61st	Boston University	240,867,000	219,054,000	399,000	8,575,000	0	12,839,000
74th	University of Connecticut (all campuses)	211,236,000	127,609,000	6,140,000	10,738,000	52,908,000	13,841,000
84th	Dartmouth College	173,266,000	123,109,000	3,289,000	4,780,000	28,431,000	13,657,000
88th	University of Massachusetts Worcester	169,090,000	126,162,000	27,018,000	5,904,000	1,106,000	8,900,000
104th	Brown University	130,741,000	84,126,000	111,000	1,785,000	40,105,000	4,614,000
105th	Tufts University	126,432,000	92,997,000	489,000	7,392,000	11,826,000	13,728,000
109th	University of Massachusetts Amherst	120,788,000	65,452,000	3,597,000	4,914,000	38,932,000	7,893,000
111th	University of Vermont	114,120,000	79,015,000	5,003,000	6,856,000	16,370,000	6,876,000
112th	Woods Hole Oceanographic Institution	114,087,000	100,456,000	116,000	72,000	9,138,000	4,305,000
118th	University of New Hampshire	103,935,000	67,917,000	4,034,000	6,032,000	19,312,000	6,640,000
132st	University of Maine	81,216,000	36,513,000	9,941,000	3,737,000	28,871,000	2,154,000
145th	University of Rhode Island	60,947,000	48,590,000	6,974,000	2,474,000	2,909,000	0
156th	Brandeis University	51,498,000	38,041,000	177,000	0	5,876,000	7,404,000
163rd	Northeastern University	47,283,000	30,659,000	1,633,000	8,316,000	6,675,000	0
180th	Boston College	32,158,000	22,907,000	50,000	1,251,000	4,175,000	3,775,000
Total, Above New England Institutions		\$3,198,435,000	\$2,420,760,000	\$71,583,000	\$165,324,000	\$304,609,000	\$236,159,000
Total, All U.S. Institutions		42,945,081,000	27,379,233,000	2,846,722,000	2,107,322,000	7,771,253,000	2,840,551,000
Above New England Institutions as % of U.S. Total		7.4%	8.8%	2.5%	7.8%	3.9%	8.3%

Source: New England Board of Higher Education analysis of National Science Foundation data; www.nsf.gov.

For more trends and indicators, visit www.nebhe.org/research.